



**VERNE BINTZ COMPANY**

**2023**

# INDEX-AT-A-GLANCE

---

Dear Customer,

We appreciate your business!

For over forty-five years our goal has been to offer you, the Foot Care Specialist, a variety of fine quality products and efficient service.

To the many faithful customers we now serve we want to say "Thanks." To those of you who have not used our products—we welcome your business.

Please call.

Sincerely,

**Verne Bintz**

## Categories

Children's Orthotics	4, 14-15
Diabetic Insoles	13, 31
Fitting Aids	34-39
Foot Care	24-25
Creams & Soaps	40
Braces & Socks	29, 30, 41
Sheet Goods	19
Impression Foam	41

## Vendors

10 Seconds	20
Bintz Orthotics	4-13, 14, 15
Birkenstock	15, 16-19
Corganics	40
Hapad	36, 37, 38, 39
Knit-Rite/Therafirm	21
Pedag	15, 22-23, 36, 37, 39
PediFix	24-25, 38, 40
Powerstep	14, 26-30
PQ Rieckens	34, 35, 36
ProThotics	13, 31
Tuli's	32
Vasyli	33

---

## Terms of Sale

We accept



- 2% 15 Days, Net 30 Days
- 2% discount not available on credit card orders
- 1 1/2% interest added per month on all past due invoices
- Past due accounts are subject to credit hold
- All items shipped at prices of current date
- All items shipped UPS, FedEx or USPS Priority Mail
- A handling charge of \$2.00 is added to each order
- No minimum orders
- There is a 10% restocking charge on returned orders
- There is a 20% restocking charge on all returned orders requiring boxing
- No returns after 30 days



# VERNE BINTZ COMPANY



**Thank you!**

From all of us at the Verne Bintz Company  
*Linda, Tina, Verne, Ellen, Brenda & Tammy*

**905 W. Liberty Dr.  
Wheaton, IL 60187**

**630-665-3113  
630-653-5077 (fax)**

**bintz@bintzco.com  
www.bintzco.com**

**Bintz  
COMFO  
Orthotics**

---

DISTRIBUTING THESE FINE PRODUCTS

**BIRKENSTOCK**  
Made in Germany • Tradition since 1774

**pedag**  
INTERNATIONAL

  
**PowerStep**

 **VASYLI Medical**

**HAPAD**

 **ProThotics**  
Biomechanically Designed Foot Orthotics

 **10 SECONDS**

**PediFix**

## Comfo-Arch™



A molded featherweight arch. Excellent for sport, work and casual shoes. Deep heel cup for great hind foot control. Easily posted and adjusted. All that is needed to modify the Comfo-Arch is a pair of scissors and sandpaper for adjustments to the length some patients need. A great solution for HMO restrictions, non-insurance and hardship cases. Don't let the price fool you, it's a winner!

#16-250

¾ Length

Sz. XS-XL

*"The Verne Bintz Company has been a life-saver for my patients. After having spent hundreds of dollars per pair, my patients find more comfortable support at a fraction of the price. Thank you so much, Verne Bintz, for remembering the working class."*  
—C. Bret Whittaker DC, D.A.B.C.O.

### Discount Program

10% off 50+ pairs

20% off 100+ pairs

	XS	S	M	L	XL
Child's	10-13				
Youth's		1-4			
Women's		5-7	8-10	11-13	
Men's		4-6	7-9	10-12	13-15

## Comfo-Max—with Metatarsal Support



A very lightweight orthotic with a deep heel cup and ample flanges for great hind foot control and arch support. It has a metatarsal elevation for midfoot support. Great for plantar fasciitis and pronation. Works great in work shoes, sport shoes and comfort shoes.

#16-650

¾ Length

Sz. A-G

	A	B	C	D	E	F	G
Women's	4-5	6-7	8-9	10	11-12		
Men's		5	6-7	8-9	10	11-12	13

## Comfo-Lite



The Comfo-Lite is a semi-rigid 3/8" 6# silver grey foam with blue cover. It is very good for use with dress shoes, sneakers or when minimal displacement is a factor. It is a very foot friendly orthotic.

#24-150

¾ Length

Sz. S-XL

*"My patients experience immediate and significant relief from plantar fasciitis when I utilize the Comfo-Lite devices. I not only use them as temporary devices but also for long term relief for those patients without orthotic coverage through their insurance."*—Lori Knutstrom, DPM

	S	M	L	XL
Women's	4-6	7-9	10-12	
Men's		5-7	8-10	11-13



## DuraFlex with Met



The DuraFlex is constructed from polypropylene with a small metatarsal pad. Good spring action and very tough. It is grindable and thermoformable at 350°F with heat gun. Made in Germany.



#28-1011      ¾ Length      Sz. 2-8

	2	3	4	5	6	7	8
European	35-36	37-38	39-40	41-42	43-44	45-46	47-48
Women's	4-5	6-7	8-9	10-11	12		
Men's	3-4	5-6	7-8	9-10	11-12	13-14	15-16

## DynaFlex with Met



A dynamic insert made of injection molded polyester. The DynaFlex becomes thermo-moldable in boiling water after approximately 10-20 seconds, by using a heat gun for approximately 30-60 seconds at 160°F, or by placing it in an oven approximately 30-60 seconds at 160°F.

#13-2022      ¾ Length      Sz. 2-8

	2	3	4	5	6	7	8
European	35	36-37	38-39	40-41	42-43	44-45	46-47
Women's	4	5-6	7-8	9-10	11-12	13-14	15-16
Men's		4-5	6-7	8-9	10-11	12-13	14-15

## Comfo-Flex



The Comfo-Flex is a white polypropylene orthotic similar to what is used in the Powerstep insoles. It is low bulk for nice shoe fit and great for general foot fatigue. It is easily adjusted with a heat gun.

#14-1036      ¾ Length      Sz. 36, 38, 40, 42, 44, 46

European	36	38	40	42	44	46
Women's	6-7	8-9	10-11	12-13		
Men's		6-7	8-9	10-11	12-13	14-15

## Comfo Zone



This innovative insole is constructed for optimal pressure distribution. It is made of an open-cell polyurethane foam. Strategically placed foam cut-out zones for the heel, cuboid, metatarsal and hallux comfort.

- Easy to modify
- Contains a metatarsal pad
- No glue is used during the production process, giving you the advantage of not having to worry about delamination
- Shear forces are reduced due to the strategically placed suede cut outs in the top cover
- Provides optimal pressure distribution and a 96% rebound rate while performing any day-to-day activities
- 20/50 pure comfort: Different shore densities throughout the insole give each area of the foot perfect cushion and support: 20 shore A forefoot/50 shore A midfoot/20 shore A rearfoot
- Made in Germany



(Size chart page 7)

#28-7004

Sizes 35-48

## Bintz Products from Germany



The products with this flag are a part of our German product discount program.

- Avoid internet competition
- Look and feel of custom made
- Rename them what you like
- Charge what you like

**Great discount program.  
Increase your margins!**

10% off  
10+ pairs of a style

20% off  
20+ pairs of a style

## Comfo Pro

The same base as the Comfo Zone's open-cell polyurethane foam with a brown microfiber suede-like cover.



- Well placed metatarsal pad
- Great hind foot control
- Polypropylene shell in heel
- Medial and lateral flanges
- Made in Germany



#28-8000

Sizes 36-47

FYI: Comfo Pro, Comfo Basic, Comfo Zone  
all have the same mold form

## Comfo Basic

Constructed with an open-cell polyurethane foam specially designed for use in the footbed. Upper material is a microfiber suede-like fabric.



- Well placed metatarsal pad
- Medial and lateral flanges
- Great hind foot control
- All purpose orthotic for dress or athletic shoes
- Low profile design
- Made in Germany



#28-8100

Sizes 36-47

European	35	36	37	38	39	40	41	42	43	44	45	46	47	48
Women's	4	5	6	7	8	9	10	11	12					
Men's	3	4	5	6	7	8	9	10	11	12	13	14	15	16

## Comfo Flange



Full length orthotic designed with a high flange for children and adults. Soft edges decrease the chance for pressure marks. The cushioning along the vault helps the foot muscles stay active and continually develop.

- Fits in sports and athletic shoes
- Comes with postings
- 20 shore A forefoot—50 shore A rearfoot
- Great hind foot control—1/2" heel cup
- High moisture absorption
- Made in Germany



#28-7005

Kid Sizes 21-22 to 33-34

Adult Sizes 35-36 to 45-46

European	21-22	23-24	25-26	27-28	29-30	31-32	33-34	35-36	37-38	39-40	41-42	43-44	45-46
Children's	5-6	7-7.5	8-8.5	9-10	11-12								
Youth's						13-1	2-3						
Women's								4-5	6-7	8-9	10-11	12	
Men's								3-4	5-6	7-8	9-10	11-12	13-14

## Comfo Cork



**Available up to men's size 20!**

Cork insoles are naturally shock resistant, and they provide excellent cushioning. Cork is naturally breathable, contours to the foot, is lighter, and absorbs moisture. It also has good durability and is naturally antibacterial. It is an excellent insulator, preventing over-cooling or over-heating. It stays relatively odor resistant with normal use (needs to be dried out completely from time to time).

- Consists of 80% cork and 20% EVA
- Grindable and thermoformable



#28-7007

Sz. 35-36 to 51-52

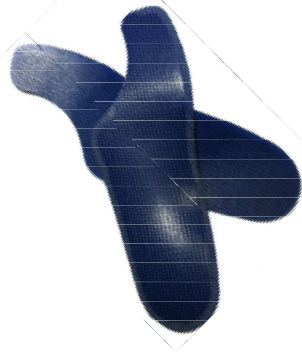
European	35-36	37-38	39-40	41-42	43-44	45-46	47-48	49-50	51-52
Women's	4-5	6-7	8-9	10-11	12				
Men's	3-4	5-6	7-8	9-10	11-12	13-14	15-16	17-18	19-20

## Hallux Rigidus/Turf Toe

### Glass Fiber Composite Hallux Rigidus Turf Toe

#### Morton Syndrome Insole-Premolded

Supports the great toe. Ideal for sports injuries and eliminates hyperextension of the toe. Glass webbing is combined with an acrylic polymer which allows the material to maintain its density and integrity.



- No special band saw blades needed
- No fraying of the edges—smooth finish
- Easily adjusted with a heat gun at 244-266°F
- Reheatable and remoldable
- Made in Germany



#23-7001

Sz. 2-7

	2	3	4	5	6	7
European	35-36	37-38	39-40	41-42	43-44	45-46
Women's	4-5	6-7	8-9	10-11	12-13	
Men's		5-6	7-8	9-10	11-12	13-14

### Hallux Trainer

Constructed with an open cell polyurethane foam and integrated with a firm Hallux shell (see below). The top cover stretches and moves with patients' movements. It contains a metatarsal pad and antibacterial properties. Made in Germany.



#28-7003

Sz. 36-46



	36	37	38	39	40	41	42	43	44	45	46
European											
Women's	5	6	7	8	9	10	11	12			
Men's	4	5	6	7	8	9	10	11	12	13	14

### Hallux Dress

Constructed with a black open cell polyurethane foam upper layer. The stability core is fully embedded in foam with an extended plate that braces the metatarsophalangeal joint as well as soft padding for the heel. Good edge stability, high moisture absorption, optimum pressure distribution. The thin profile allows it to fit nicely even in a dress shoe. Made in Germany.



#28-7006

Sz. 35-48



	35	36	37	38	39	40	41	42	43	44	45	46	47	48
European														
Women's	4	5	6	7	8	9	10	11	12					
Men's	3	4	5	6	7	8	9	10	11	12	13	14	15	16

## Glass & Carbon Composites

### Carbon Fiber Spring Plate



Light as a feather, stronger than steel. These plates store energy at toe off and return it into the swing phase of gait for a more natural walk. Designed to fit depth-style footwear and are contoured to fit at the heel and toe. The contoured plates will not rock or break. Available in 13 sizes which means a more precise fit which is a definite plus. **Specify Left or Right.**

#40-2003-W  
#40-2003-M

Women's  
Men's

Sz. W5-10  
Sz. M7-13



### Carbon Contour



A composite material made with carbon webbing and laminated with acrylic resins, which is suitable for applications that require a balance. This material does not conduct heat and remains cool to the foot even during the most grueling conditions. Material is moldable and grindable. Made in Germany. **Sold per pair.**



#23-7008

Sz. 36-45



European	36	37	38	39	40	41	42	43	44	45
Women's	5	6	7	8	9	10	11			
Men's	4	5	6	7	8	9	10	11	12	13

### Glass Fiber Composite Full Length Precut Flat Plate



Glass webbing is combined with an acrylic resin which allows the material to maintain its density and integrity. Size chart above.

- No special band saw blades needed
- No fraying of the edges—smooth finish
- Easily adjusted with a heat gun at 244-266°F
- Reheatable and remoldable
- Made in Germany



#23-7002

Sz. 37-45

### Glass Fiber Composite Plates (Made in Germany)



#23-GFC1.4-48	1.4mm	4 x 8"
#23-GFC1.4-59	1.4mm	5 x 9"
#23-GFC2.4-59	2.4mm	5 x 9"
#23-GFC2.4-512	2.4mm	5 x 12"
#23-GFC2.4-2024	2.4mm	20 x 24"

## Black Ultimate

Three quarter length dress orthotic made in Germany. Size chart below.



- Polypropylene insole
- 2mm foam cushion
- Black perforated cover
- Available with or without metatarsal pad
- Very little heel cup

#28-4800                      w/ Met              Sz. 35-36 to 45-46  
#28-4850                      w/out Met      Sz. 35-36 to 45-46



## CarboTech

Three quarter length orthotic made in Germany. Size chart below.



- Polypropylene insole
- Metatarsal pad
- Bright blue cover
- Carbon look bottom cover
- Nice heel cup

#28-4500                                      Sz. 36-47



## CrocoTech

Three quarter length orthotic made in Germany. Size chart below.



- Polypropylene insole
- Brown croc look cover
- Available with or without metatarsal pad
- Very little heel cup

#28-4600                      w/ Met              Sz. 36-46  
#28-4650                      w/out Met      Sz. 36-46



European	35	36	37	38	39	40	41	42	43	44	45	46
Women's	4	5	6	7	8	9	10	11	12			
Men's	3	4	5	6	7	8	9	10	11	12	13	14



## Lateral Wedge Gel



Full length orthotic designed with a lateral support wedge to help ensure proper foot-knee alignment to reduce arthritis pain. Indicated for: knee and ankle pain associated with arthritis, tendonitis or instability; pain associated with shin splints, plantar fasciitis and mid-foot osteoarthritis; and leg length discrepancies. PQ gel with a neoprene topcover.

#40-1060

Sz. S-L

	S	M	L
Women's	7-9	10-11	12-13
Men's	6-7	8-9	10-13

## Posting Strips—3°



These posting strips are 3° pre-cut material wedges with adhesive that provide a medial or lateral posting for orthotics.

With PSA backing.

#10-22-8 Blue EVA 2.5 x 14"  
#10-22-9 Black EFM-Firm 2.5 x 14"

## QuikFit Short



A 3-layer durable athletic orthotic that has a core of EFM™.  
Customize: 200-250°F (1½ - 2 min.).  
Blue Microcell Puff + EFM + Blue Microcell Puff.

#10-6E6S ¾ Length Sz. A-F

	A		B		C		D		E		F	
Women's	5	6	7	8	9	10	11	12	13	14		
Men's	3	4	5	6	7	8	9	10	11	12	13	14

## Diabetic Insoles

### Diabetic Insole Dual Density—Medicare Approved

1/8" Pink PE top cover + 3/16" EVA. Heat moldable.



#22-4267

Sz. S-XL

1-11 pairs

12+ pairs

	S	M	L	XL
Women's	7-8	9-10	11-12	
Men's	6-7	8-9	10-11	12-13

### ProThotics™ Comfort and Comfort Gel

Constructed with a multi-density material combination of Plastazote® and polyurethane, these orthotics offer superb resilience, cushioning and shock absorption. Plastazote's distinctive self contouring capabilities and hypoallergenic, anti-microbial formulation enable it to conform to the shape of the foot and evenly distribute pressure across the surface of the foot. Designed to fit into both traditional footwear and "additional depth" orthopedic shoes. 1/8" Pink Plastazote + 3/16" Urethane.



*Comfort*

#4-4282

Comfort

Sz. A-E

#4-4283

Comfort Gel

Sz. A-E



*Comfort Gel*

	A	B	C	D	E
Women's	3-6.5	7-8.5	9-10.5	11-12	
Men's		5-6.5	7-8.5	9-10.5	11-14

### ProThotics™ Pressure Relief—with Metatarsal

The Pressure Relief has a Plastazote® top layer which molds to the shape of your foot, evenly distributing pressure in a hypoallergenic, anti-microbial environment. Pressure Relief provides protection against diabetic ulceration, and relief for arthritis, or other foot sensitivities.



#19-23701

Sz. A-F

	A	B	C	D	E	F
Women's	3-6.5	7-8.5	9-10.5	11-12.5	13-15	
Men's		5-6.5	7-8.5	9-10.5	11-12.5	13-15



# Bintz

## Children's Orthotics



### Comfo-Arch™



A molded featherweight arch. Excellent for children who do not need a fabricated orthotic. Easily posted and adjusted. Deep heel cup for great hind foot control. It's a winner!

#16-250

Sz. XS-XL

**Bintz**  
**COMFO**  
Orthotics

	XS	S	M	L	XL
Child's	10-13				
Youth		1-4			
Women's		5-7	8-10	11-13	
Men's		4-6	7-9	10-12	13-15

### Powerstep PowerKids/Pinnacle Jr 3/4



**PowerStep**



Affordable, easy-to-use, prefabricated orthotics for kids – similar fit and function of custom-made products. Shock-absorbing top layer with firm, durable EVA base. A 2-degree medial heel post and deep heel cup provide rear-foot stability by properly positioning and cradling the heel. Built-in arch support for kids vertically lifts and supports the arch and restores proper alignment to the mid-foot and forefoot. These 3/4 length kids insoles are comfortable on the forefoot and toes.

- Semi-rigid arch support and heel cradle for increased support and stability
- Mildly angled heel platform stabilizes and protects the heel with each step
- Double layer, shock absorbing EVA/PORON® cushion casing for comfort
- Heat and friction reducing, anti-microbial top fabric

#25-850

Sz. KB-KG

	K-B	K-C	K-D	K-E	K-F	K-G
Toddler	8.5-9.5	10-11	11.5-12.5	13-1		
You th					1.5-2.5	3-4

### Powerstep Pinnacle Jr



**PowerStep**



The popular Powerstep Pinnacle is now available in Toddler and Youth sizes! It comes with an encapsulated design that includes a firm but flexible support shell, built-in foot support, heel cradle for motion control and plush cushioning.

- Semi-rigid foot arch support and heel cradle for increased support and stability in children's shoes
- VCT® Variable Cushioning Technology provides targeted and controlled cushioning with a soft, supportive feel
- Dual layer cushioning with durable EVA foam base
- Heat and friction reducing, anti-microbial top fabric

#25-875

Toddler Sizes 11.5-13 and Youth Sizes 1-6

# Bintz

## Children's Orthotics



### Birkenstock Children's Orthotics

**BIRKENSTOCK**  
Made in Germany • Tradition since 1774

#### Colorful High Flange EVA Foam Shell 3/4 Length

Controls excessive pronation and supination. High flanges provide stability. BirkoFlex base with EVA liner cushions, is flexible and durable.



#15-1001107/9192-C

Sz. 24-35

#### BirkoBalance Cork 3/4 Length

This shell can be used to help problems such as fallen arches and excessive pronation. The high flanges support the cuboid area and provide stability.



#5-1001190C/15501-C

Wide/Sz. 24-34

European	24	25	26	27	28	29	30	31	32	33	34	35
Child's	6	7	8	9	10	11	12	13	1	2	3	4

### Pedag Bambini

Children's arch support, vegetable tanned cowhide cover. Particularly elastic and flexible.



#50-192

Sz. 22-23 to 34-35

European	22-23	24-25	26-27	28-29	30-31	32-33	34-35
Child's	6-7	8-9	9.5-10	10.5-11	12-13		
Youth						2-3	4-5

### Comfo Flange

Full length orthotic designed with a high flange for children and adults.

- 20 shore A forefoot—50 shore A rearfoot
- Great hind foot control
- High moisture absorption
- Made in Germany



#28-7005

Kid Sizes 21-22 to 33-34

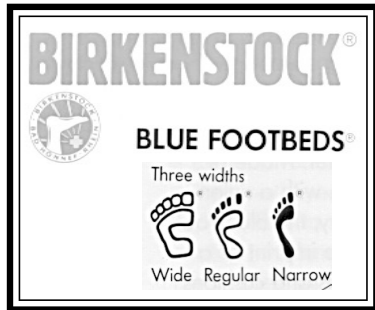
Adult Sizes 35-36 to 45-46

European	21-22	23-24	25-26	27-28	29-30	31-32	33-34	35-36	37-38	39-40	41-42	43-44	45-46
Children's	5-6	7-7.5	8-8.5	9-10	11-12								
Youth's						13-1	2-3						
Women's								4-5	6-7	8-9	10-11	12	
Men's								3-4	5-6	7-8	9-10	11-12	13-14



# BIRKENSTOCK®

*Made in Germany • Tradition since 1774*



**THE BLUE FOOTBED** can make the best sports shoe even better. Made of durable ground cork, with a nylon-type filler for flexibility, the Blue Footbed is shaped like the imprint of a healthy foot. It cradles and cushions your heel, providing a “shock absorber” to help ease the pressure of heel strike.

## Blue Footbed Arch Support for Casual Shoes

"Casual" footbeds are designed for shoes with minimal or no heels. They are ideal for athletic and flat casual shoes. High flanges keep the feet from rolling inside the shoes, and deep heel cups absorb shock.



#15-1001172/11001 Wide  
#15-1001173/11002 Medium

Sz. 35-48  
Sz. 35-48

## Blue Footbed Arch Support for Heeled Shoes

For shoes with slight heels. “Heeled” footbeds have a pronounced metatarsal support to counterbalance the heel. Flanges for side support.



#15-1001156/10001 Wide  
#15-1001157/10002 Medium

Sz. 35-48  
Sz. 36-48

## Birkenstock Size Chart

European	35	36	37	38	39	40	41	42	43	44	45	46	47	48
Women's	4	5	6	7	8	9	10	11	12	13				
Men's				5	6	7	8	9	10	11	12	13	14	15

## Cork—A Natural Resource

Cork is a natural resource with ideal properties. It is lightweight, flexible, absorbs minimal amounts of water and has an antibacterial quality. It takes only a decade for the cork oak tree to develop a layer of usable cork. The cork bark is carefully removed so the tree trunk won't be damaged. It takes 30 to 40 years for a tree to yield its first harvest. The bark is stored outside for about 1-2 years, then it is boiled in water and cut into strips, ground and sifted into different size granules. Depending upon the use, granules are sorted by 3-4 weight classes.



### BirkoBalance—Cork Shell—High Flange

This shell can be used to help problems such as fallen arches and excessive pronation. The high flanges support the cuboid area and provide stability.



#5-1001190/15501 Unlined/Wide

Sz. 35-47



#### POP Packaging (Boxed)

#15-1001197/15611 Lined/Wide

Sz. 35-47

#15-1001198/15612 Lined/Medium

Sz. 35-47

### BirkoSport Arch Support (POP)

A two piece system that adds support and cushioning. On the bottom is a three quarter length arch support made from **BirkoKork** (Cork and EVA mixture). The full length top piece is a blue EVA innersole that fits over the arch support to absorb shock and provide additional support.



Comes in POP packaging (boxed).

#15-1001113/9210 Medium

Sz. 35-47

## BirkoBasic—EVA

BirkoBasic EVA is lightweight, flexible, washable. It can be heated and shaped, is easily ground and beveled. The edges are soft for maximum comfort. The deep heel cup cushions and protects the heel bone.



#15-1001169/10521 EVA/Wide Sz. 33-48  
 #15-1001170/10522 EVA/Medium Sz. 33-48

## BirkoBasic—Cork

Unlined shells are recommended when adjustments to the upper side are necessary. The metatarsal pads, combined with medial lateral flanges, help to relieve pressure in the bunion area.



#5-1001163/10501 Unlined/Wide Sz. 35-48  
 #5-1001164/10502 Unlined/Medium Sz. 36-46

## BirkoContact Orthopedic—Cork

Designed with a deep heel cup to help support the cuboid area, this shell has a medium metatarsal pad and low flanges.



#5-1001182/15001 Unlined/Wide Sz. 35-48

European	33	34	35	36	37	38	39	40	41	42	43	44	45	46	47	48
Youth	2	3														
Women's			4	5	6	7	8	9	10	11	12	13				
Men's						5	6	7	8	9	10	11	12	13	14	15



---

## Birkenstock EVA Outsole Sheet—with "Birk" Logo



Outsole sheets, the tried-and-tested original product from Birkenstock®, feature the famous bone profile. They present excellent durability and anti-slip properties. The highly elastic material core provides effective shock absorption.

#15-100000-2/100-06

Black 10mm

24 x 35"

---

## Birkenstock BirkoKork®

The highly elastic BirkoKork® natural cork sheets are the ideal base material for all kinds of orthopedic product processing. They are light and flexible, easy to shape and thermo-malleable. BirkoKork® sheets are especially suitable for the production of soft foot supports and for raising footbed arch supports.



**Soft BirkoKork®:** Soft cork can be used for repair or orthopedic work. It becomes pliable at 150°F and can be molded at 200°F. Discolors and burns at about 300°F.

#15-300702-6/130-05

5mm

12 x 18"

#15-300702-7/130-10

10mm

12 x 18"



**Hard BirkoKork®:** Hard cork is used for orthopedic fabrication. It becomes pliable at 170°F and is easily formed at 200°F.

#15-300703-6/133-05

5mm

12 x 18"

#15-300703-7/133-10

10mm

12 x 18"

---

## Birkenstock Cork Sealer

Coats and protects cork footbeds. Used to prolong the life of sandals.



#15-0400010/40001

3 oz. tubes/12 per case

## 10 Seconds Flat Foot® Control



Relieves pain caused by biomechanical problems associated with flat feet —foot, ankle, hip, lower back, leg and arch pain.

- PORON® cushioning provides maximum cushioning for athletic use
- Anti-blister top cover: By controlling the amount the foot slides across the insole's surface, the anti-friction top cover helps prevent blisters and keeps the feet cooler and drier
- Fights odors: Biostatic™ antimicrobial top cover protects against odor causing bacteria and other microbes

#17-101

Sz. M4-14, W5.5-12.5

## 10 Seconds Pressure Relief Neutral & with Metatarsal



The Pressure Relief Insole was designed by a team of doctors and pedorthists to improve balance and body alignment.

- Utilizes innovative technology to relieve sore and tired feet
- Plastazote® top cover molds to your feet for a custom fit
- Abzorb® cushioning provides maximum shock absorption at the heel and the forefoot
- The anatomical arch support and heel cradle work together to support the foot and redistribute pressure
- Air flow channels are designed to move warm air out and draw cool air in
- Fits most athletic, casual, dress and hiking shoes which come with removable footbeds

#17-3020

M4-16, W5.5-12.5

Neutral

#17-3030T

M4-16, W5.5-12.5

With Met

## 10 Seconds Motion Control



The 10 Seconds Motion Control insole was designed with shock absorption for impacts commonly seen in professionals like delivery drivers and tech services. This insole provides added support while the non-binding tray moves with you through quick irregular tasks. The shock attenuation foam and impact zones are the perfect material combination for on-the-go careers, where you're on your feet and on the move during the course of the day.

#17-3210T

M4-14, W5.5-12.5

Men's	4	5	6	7	8	9	10	11	12	13	14	15	16
Women's	5.5	6.5	7.5	8.5	9.5	10.5	11.5	12.5					



## SmartKnit Diabetic Socks



The supersoft, seamless sock for people with diabetes, arthritis or sensitive feet. Made starting at the toe and circling to the top. IONIC+ moisture wicking fibers wick moisture away from skin and assist in inhibiting odor in the sock. Non-binding Halo Top™.

### Regular Height—Crew

#3-711 White Sz. S-XL  
#3-717 Black Sz. S-XL

### Quarter Height—Mini-Crew

#3-721 White Sz. S-XL

	S	M	L	XL
Women's	5-8	9-11	12-14	
Men's	5-7	8-10	11-13	14-16

## Therafirm Men's Support Socks



True gradient compression delivers a controlled amount of pressure greatest at the ankle and gradually decreases towards the top of the stocking to promote better blood flow. Soft comfort band is non-restrictive while staying in place all day. Comfort heel and toe.

### Men's Firm Support Socks—15-20mmHg

#3-683BL Black Sz. M-XL

### Men's Extra Firm Support Socks—20-30mmHg

#3-683XBL Black Sz. M-XL

	Ankle	Calf	Length	Shoe
Medium	9-11"	11-16.5"	12-15"	7.5-10
Large	10-14"	12-17"	13-16"	10.5-12
XLarge	11-15"	13-19"	14-18"	12.5+

## Therafirm Women's Trouser Socks—15-20mmHg



Fashionable over the calf ribbed style, graduated compression trouser socks feature non-binding tops that stay up on their own. Recommended for the treatment of mild varicosities, fatigued legs and minor swelling.

#3-685B Black Sz. M-XL

	Ankle	Calf	Length	Shoe
Medium	7.5-9"	13-15.5"	13-19"	5.5-7.5
Large	9.25-10.75"	15-17.5"	14-20"	8-10.5
XLarge	11-11.5"	17.75-18.5"	15-22"	11-12

## Pedag Holiday



All of the great qualities of the Viva Mini in the vintage Holiday shape!

#50-179-47	Tan	Sz. 35-48
#50-287-947	Black	Sz. 35-46

## Pedag Viva Mini



A wonderful and economical solution for dress shoes!

- $\frac{3}{4}$  orthotic with a semi-rigid, heat moldable polypropylene longitudinal arch support
- Softer pad supports the latitudinal arch (metatarsal)
- A heel cushion relieves pressure and impact on the heel
- Orthopedic design helps prevent and relieve flattening and pronation by helping the foot regain an anatomically correct position
- Recommended for those who suffer from plantar fasciitis and metatarsalgia
- Very thin and ultra light—thin enough to fit in almost any shoe
- Made of vegetable tanned leather which allows the foot to breathe and absorbs moisture

#50-179BX	Tan	Sz. 35-48
#50-287-911	Black	Sz. 35-46

## Pedag Viva



The Pedag Viva is a full length version of the Viva Mini. Perfect support for oxfords and dress shoes with purifying active carbon filter to help prevent foot odor. The Viva can be adjusted with a heat gun or easily posted.

#50-187	Sz. 35-48
---------	-----------

## Pedag Relax



The Pedag Relax can be used with any sport or casual shoe. The  $\frac{3}{4}$  length gives metatarsal support, arch support and heel cupping for a triple comfort effect, but leaves plenty of forefoot room. Leather cover.

#50-127	Sz. 36-46
---------	-----------

European	35	36	37	38	39	40	41	42	43	44	45	46	47	48
Women's	5	6	7	8	9	10	11	12						
Men's					6	7	8	9	10	11	12	13	14	15

### Pedag Viva Sport



The Pedag Viva Sport is a semi-rigid, polypropylene footbed that supports the longitudinal arch and the plantar fascia. Anatomically positioned pad maintains the metatarsal arch. Heel cushion adds to the shock absorbing properties. Innovative material offers high shock elasticity for impact activities. Extremely tough and hardwearing. Great for diabetic and sensitive feet. The orthotic is the same as the Viva Mini insole.

#50-181

Sz. 36-46

### Pedag Soft



The Pedag Soft is a latex foam pad which softens steps. The Soft can also be used to make shoes more snug to improve fit. Perfumed. Solid yellow latex with black cover.

#50-104

Sz. 36-48

### Pedag Comfort



The Pedag Comfort is a  $\frac{3}{4}$  length insert made of vegetable tanned leather specifically designed for severely spreadfeet. The T-Form metatarsal pad prevents and alleviates symptoms of spreadfoot. Extra soft heel padding for more comfort. Ideal to wear in any flat shoes or pumps.

#50-142

Sz. 36-46

### Pedag Magic Step & Magic Step Plus



Memory foam insole made of fine goatskin for cushioned standing and walking. Absorbs shock to feet, spine and joints.

Magic Step Plus adds longitudinal and latitudinal arch support

#50-157 Magic Step

Sz. 36-46

#50-197 Magic Step Plus

Sz. 36-46

### Pedag Soft Comfort



The Pedag Soft Comfort is made with an exclusive high tech foam with millions of air chambers to cushion and comfort all sensitive zones of the foot sole. Durable and resilient. The cover is made of a 4-way stretch fabric and helps to prevent blisters, is skin friendly and moisture distributing. Both sides are wearable. Hand washable. Made in Germany. Available in seven European sizes.

#50-11411

Sz. 35-36 to 47-48



## PediFix Arch Bandage



These soft, cotton-covered elastic bandages gently “squeeze” your feet to give you more support and make standing and walking comfortable.

#20-P60	One Size	1 per pkg
---------	----------	-----------

## PediFix Hammer Toe Cushions—Felt and Visco-GEL



Place under bent, or “hammer” toes to relieve pressure and friction, especially on toe tips. Loop keeps cushions in place without adhesives.

#20-P54-Felt	Right or Left Sz. S-L	1 per pkg
#20-P53-Gel	Right or Left Sz. S-L	1 per pkg

## PediFix Toe Straightener



Elastic bands gently guide deformed toes into place. Splints encourage flexing and extension of hammer toes to prevent fixation and rigidity. Also an ideal splint after toe surgery. Scissor-trimmable. Fits right or left foot.

#20-P55	Single Toe	1 per pkg
#20-P57	Double Toe	1 per pkg

## PediFix Bunion Guard—Visco-GEL



Relieves pain, cushions and protects sensitive large toe or small toe joint.

#20-P46-L	Large Toe	1 per pkg
#20-P46-S	Little Toe	1 per pkg

## PediFix "Stay-Put" Toe Spacers—Visco-GEL



Soft Gel loop keeps spacer in position between first and second toes to separate and align, and prevents rubbing and friction.

#20-P27-M	Medium	2 per pkg
#20-P27-L	Large	2 per pkg

## PediFix Toe Spacers—Visco-GEL



Mild flanges help keep the Gel spacers in place between first and second toes.

#20-P28M	Medium POP	2 per pkg
#20-112-5	Small	4 per bag
#20-112-6	Medium	4 per bag
#20-112-7	Large	4 per bag



## Additional PediFix Products

Please visit our website for detailed information about each of these products.

<b>Bulk Packaging</b>		<b>Per Bag</b>
20-105-0	Visco-GEL Ribbed Digital Caps S/M	6
20-105-1	Visco-GEL Ribbed Digital Caps L/XL	6
20-120-1	Visco-GEL Digital Tubes 1"	3
20-120-2	Visco-GEL Digital Tubes 3/4"	3

<b>POP Packaging</b>		<b>Per Pkg</b>
20-P1037	Visco-GEL Hammer ToeCrutch S, M, L	2
20-P15	Felt Corn Protectors	10
20-P16	Felt Callus Protectors	8
20-P26M	Visco-GEL Stay-Put Toe Separators	2
20-P229M	Bunion Relievers M	2
20-P280MX	3-Layer Toe Separators Mixed Sizes	6
20-P3020	2-Sided Foot File	1
20-P3069	Deep Healing Foot Cream 4 oz	1
20-P3071	FungaSoap 6 oz	1
20-P31S	Visco-GEL Toe Separators S	2
20-P33	Visco-GEL Toe Buddy	1
20-P3310	Callus Control Cream 4 oz	1
20-P35	Visco-GEL Little ToeBuddy	1
20-P47	Visco-GEL Dual-Action Bunion Fix	1
20-P51	Toe Trainers	2
20-P6035	Bunion Regulator Left or Right S, M, L	1
20-P81S	Visco-GEL Corn Protectors S	2
20-P82S	Visco-GEL Toe Protector S	1
20-P83	Toe Cushions	2
20-P88	Ball of Foot Cushion	1



## Powerstep Pinnacle



The Pinnacle Full Length Orthotic insert offers the perfect blend of foot control, flexibility and cushioning. Encapsulated design with a firm but flexible support shell, built-in arch support and heel cradle for motion control. Plush cushioning with VCT® Technology. Increases stability and comfort in casual, athletic and work shoes. (Size chart page 25)

#25-250

Full Length

Sz. Asm-L

Also available in children's sizes! (See page 14)

## Powerstep Pinnacle Plus Met



The Pinnacle Plus Full Length Orthotic features a built-in metatarsal cushion to spread and cushion the metatarsal heads to help alleviate pain. (Size chart page 27)

#25-275

Full Length

Sz. A-K

## Powerstep Pinnacle Maxx Support



This is the orthotic of choice for motion control and stability. Relieves pain that occurs during on-the-job standing, walking and high intensity sports involving running and walking. It features the Heel Secure Comfort System™, a uniquely designed heel that offers a deeper cup and an expansive micro thin platform, mildly angled for **maximum support**. (Size chart page 27)

#25-450

Full Length

Sz. Asm-L

## Powerstep Pinnacle High and Low



The Powerstep Pinnacle High and Low have built-in high or low arch support and two layers of plush cushioning, which is the perfect balance of comfort and support. Featuring the signature Powerstep arch shape, these insoles cradle the arch and heel, adding stability and motion control, to control excess stress on joints and tendons. (Size chart page 27)

#25-475

High

Sz. A-K



#25-425

Low

Sz. A-K

## Powerstep ProTech



Powerstep ProTech features a strong, medical-grade polypropylene shell that is calibrated for optimal flexibility and support. This is encased in a double-layer of PORON®/EVA cushioning, and finally a PORON® heel Comfort Cushion™. **Available only to the medical community.**

#25-550	Full Length	Sz. Asm-L
#25-750	¾ Length	Sz. Asm-F
#25-575	Full Length Met	Sz. A-K

## Powerstep ProTech Control—for overpronation



Developed with the Foot Secure System™ to offer pain relief for mild to moderate overpronators, it incorporates a mild angled heel post. Can be used as the first line therapy for moderate overpronation. **Available only to the medical community.**

#25-675	Full Length	Sz. Asm-L
#25-650	¾ Length	Sz. Asm-F
#25-625	Full Length Wide	Sz. A-K
#25-700	Full Length Met	Sz. A-K

## Powerstep Pinnacle Wide Fit



Calibrated for firmer arch support to resist "bottoming out" under weight. The wider profile and stable heel cup better support and better fit wide-width shoes, while the permanent heat and friction-reducing top fabric with anti-microbial qualities combats foot odor and helps keep feet drier. Fits widths 3E-6E.

#25-950	Full Length	Sz. Asm-L
---------	-------------	-----------

## Powerstep ¾ Length Size Chart

	Asm	A	B	C	D	E	F
Women's	6-6.5	7-8.5	9-10.5	11-11.5	12-12.5	13-13.5	14-15
Men's	4-4.5	5-6.5	7-8.5	9-9.5	10-10.5	11-11.5	12-13

## Powerstep Full Length Size Chart

	Asm	A	B	C	D	E	F	G	H	I/J	K	L
Women's	5-5.5	6-6.5	7-7.5	8-8.5	9-9.5	10-10.5	11-11.5	12-12.5	13-13.5	14-15.5		
Men's	3-3.5	4-4.5	5-5.5	6-6.5	7-7.5	8-8.5	9-9.5	10-10.5	11-11.5	12-13.5	14-15	16

## Powerstep Original



Powerstep's original, fundamental design. These foot orthotics have low profile, dual-layer cushioning that fits in most casual, dress and athletic shoes to provide foot support.

The Original is ideal for preventing and alleviating pain associated with plantar fasciitis, metatarsal pain, heel or arch pain and discomfort, mild to moderate pronation, sore/aching feet and other common foot conditions.

**Excellent option for lower-profile shoes.**

(Size chart page 27)

#25-150

Full Length

Sz. Asm-L

## Powerstep SlimTech/Pinnacle 3/4



Powerstep's Original orthotic shoe insoles in a  $\frac{3}{4}$  length are versatile to fit a variety of shoes. The  $\frac{3}{4}$  length is perfect for preventing and alleviating pain associated with plantar fasciitis, heel or arch pain and discomfort in lower profile shoes.

Ideal for all-day comfort and support in shoes with less depth at the toes.

(Size chart page 27)

#25-350

$\frac{3}{4}$  Length

Sz. Asm-F

## Powerstep SlenderFit®—for high heels



SlenderFit® Fashion insoles for high heels were designed with the female foot in mind! The ultra-slim, tapered profile fits in most women's fashion shoes including high heels, wedges, pumps, boots, sandals and more! Extra cushioning under the ball of the foot alleviates pressure for increased comfort and protection.

These shoe inserts for high heels are ideal for preventing and alleviating foot pain and discomfort associated with wearing fashion footwear.

#25-300

Sz. XS-L

	XS	S	M	L
Women's	5-6	6.5-7.5	8-9	9.5-10.5

## Powerstep Plantar Fasciitis Support Sleeve



Provides support and is ideal for daily use in reducing arch and heel pain or symptoms of plantar fasciitis. The thin, breathable design is perfect for wear under regular socks and with shoes. Ideal for mild to severe or chronic cases of plantar fasciitis and Achilles tendonitis. The 20-30mmHg compression and ribbed bands at the Achilles and arch offer support.

Suitable for use in conjunction with Powerstep orthotics for daytime use in alleviating plantar fasciitis or heel and arch pain.

#25-PFS

Black

Sz. S-XL

	Small	Medium	Large	Xlarge
Women's	4-6.5	7-10.5	11+	
Men's	3-5.5	6-9.5	10-13	13.5+
Arch*	5-8"	7-10"	9-13"	11-15"

*Measure circumference around arch*

## Powerstep Plantar Fasciitis Arch Wrap



A built-in, contoured gel pad and fully adjustable strap allow for controlled compression by lifting and supporting the arch to ease the strain on the plantar fascia. Can be worn on right or left foot, with or without a sock.

#25-PFA

Black

One size

## Powerstep Adjustable Heel Lift



Powerstep's Adjustable Heel Lift provides 3/8" additional heel height adjustment, or layers can be peeled away for 1/4" or 1/8" additional height to accommodate leg length discrepancies. The edges of these adjustable heel lifts are tapered for improved comfort. Ideal for dress or casual shoes.

#25-AHL-S

Small

M4-5, W5-6

#25-AHL-M

Medium

M6-9, W7-11

#25-AHL-L

Large

M10-13

### Powerstep Fusion Sandal

Powerstep Fusion Orthotic Sandals provide the perfect blend of Powerstep's trusted support and stability in a true orthotic sandal.



Ideal for preventing and alleviating pain associated with plantar fasciitis and other common foot conditions. They are also excellent for recovery or use after a long run.

#25-8000

Men's Black Sandal Sz. M7-14

#25-8500

Women's Black Sandal Sz. W6-11

### Powerstep Luxe Slipper

Powerstep Luxe Orthotic Slippers provide the perfect blend of Powerstep's trusted support and stability in a true orthotic slipper. High quality materials and the biomechanically-correct contouring create a premium, supportive orthotic with a soft, cozy feel.



Luxe Orthotic Slippers help alleviate pain from plantar fasciitis and other common foot conditions.

#25-8850T

Taupe

Sz. W6-11

### Powerstep UltraStretch® Night Sock

Combines ultra-soft material, a comfortable sleeve design and an adjustable dorsiflexion strap which gently pulls the toes to stretch the calf muscle and soft tissues of the foot and ankle. Helps alleviate the heel pain associated with taking those first morning steps.



- Comfortably stretches the calf and soft tissues of the foot
- Adjustable strap provides a gentle, effective stretch

#25-975-R

Regular

Calf Size up to 16"

#25-975-L

Large

Calf Size 16-21"

## Three Levels of Support!

### Level I: ProThotics™ Performance Sport



Performance Sport has a metatarsal rise, as well as exceptional cushioning. Trimmable. Strong arch and metatarsal rise help relieve pain in the ball of the foot and guard against harmful overpronation.

#19-237

Sz. A-F

### Level II: ProThotics™ Motion Control



The Motion Control Insole has a soft and supportive metatarsal rise, as well as a **structural stabilizer** which promotes maximum stability, prevents pronation, rolling ankles, and helps to correct postural alignment. It is the original design which combines support with cushioning, only possible with the arch stabilizer integrated with Vy-Gel where heel strike occurs.

#19-217

Sz. A-F

### Level III: ProThotics™ Ultra Arch



The Ultra Arch is an orthotic insole with superior cushioning, arch support and forefoot pressure relief. This is achieved with a **composite graphite arch support inlay** within a zero memory polyurethane base layer, plus Vy-Gel in the heel and forefoot. Vy-Gel injection within the heel cup results in a cushioned heel strike and fully supported arch.

#19-236

Sz. A-F

### ProThotics™ Pressure Relief—with Metatarsal



The Pressure Relief is identical to the Performance Sport but has a Plastazote® top layer which molds to the shape of your foot, evenly distributing pressure in a hypoallergenic, anti-microbial environment. Pressure Relief provides protection against **diabetic ulceration, and relief for arthritis**, or other foot sensitivities.

#19-23701

Sz. A-F

	A	B	C	D	E	F
Women's	3-6.5	7-8.5	9-10.5	11-12.5	13-15	
Men's		5-6.5	7-8.5	9-10.5	11-12.5	13-15



Tuli's® patented, multi-cell, multi-layer "waffle" design absorbs shock and returns impact energy just like the system naturally found in your feet. Upon impact, the waffle construction bears down and rotates with the normal motion of the foot to absorb the shock of walking and running; keeping your feet, knees, hips and back in alignment for maximum comfort and performance.

### Tuli's Classic Heel Cups™



Tuli's® Classic Heel Cups™ work in all shoe styles because they are supportive, yet flexible enough for any shoe. You can have light-weight support and cushioning all day long whatever you may be doing.

#18-10-010	Regular	Under 175 lbs.
#18-10-020	Large	Over 175 lbs.

### Tuli's Heavy Duty Heel Cups™



The primary force of the heel strike is absorbed by the larger and higher waffle pattern while the lower and denser waffle pattern absorbs the "high pressure" and final force spike of heel strike.

#18-10-211	Small	Under 80 lbs.
#18-10-212	Regular	Under 175 lbs.
#18-10-214	Large	Over 175 lbs.

### Tuli's Classic Gel Heel Cups™



TuliGel is a specially formulated polymer that is lighter, softer and more resilient than the material used in other heel cups.

#18-102-15	Regular	Under 175 lbs.
#18-102-16	Large	Over 175 lbs.

### Tuli's Heavy Duty Gel Heel Cups™

Use Heavy Duty Gel Heel Cups for high impact activities.



#18-102-19	Small	Under 80 lbs.
#18-102-17	Regular	Under 175 lbs.
#18-102-18	Large	Over 175 lbs.





## Heat Moldable Vasyli Orthotics

Vasyli orthotics are heat moldable so you can create a custom fit for your patients and customers.



### Vasyli Dananberg



The Dananberg Orthotic makes treating first ray function easier. The world's first professional orthotic device with removable first ray sections has been designed with proximal and distal plugs which can be removed individually or together as necessary. In cases where maximum effect is required (Structural Hallux Limitus - SHL), both plugs can be removed. This orthotic is also **heat moldable** to personalize the rearfoot control.

#30-4100

Full Length

Sz. XS-XXL

### Vasyli Custom Orthotics

- **Heat moldable** for customized prescription
- Inbuilt 6° rearfoot varus angle
- Inbuilt metatarsal raise

### Vasyli Blue—Medium Density



Designed for the "average" patient with general orthotic needs, blue density orthotics provide excellent biomechanical control.

#30-4300

Full Length

Sz. S-XXL

### Vasyli Red—High Density



Designed for high performance, this orthotic provides durability and solid biomechanical control. Ideal for high activity users and overweight patients.

#30-4400

Full Length

Sz. S-XXL

#30-4450

3/4 Length

Sz. S-XL

### Vasyli Size Chart

	XS	S	M	L	XL	XXL
Youth						
Women's	4.5-6	6.5-8	8.5-10	10.5-12		
Men's	3.5-5	5.5-7	7.5-9	9.5-11	11.5-13	13.5-15

## Heel Lifts

### Medi-Heel Lift



Developed for leg length discrepancies when used individually, or elevating the heel when used in tandem. When used in one shoe at a time, the lifts help to restore pelvic balance and eliminate rotation of the lumbo-sacral spine caused by unequal leg length. Excellent shock absorption and can be stacked for a custom amount of lift. Easily cut to size with sharp scissors. Molded from a pliable, resilient, washable plastisol (not rubber) that is latex and allergy free. **Sold per single lift or bulk of twelve.** Women's lifts are 2.25" wide and men's lifts are 2.75" wide.

**Bulk 12 pack**

#29-60-3LL	Women's	3mm
#29-60-3ML	Men's	3mm
#29-60-5LL	Women's	5mm
#29-60-5ML	Men's	5mm
#29-60-7LL	Women's	7mm
#29-60-7ML	Men's	7mm
#29-60-9LL	Women's	9mm
#29-60-9ML	Men's	9mm
#29-60-12LL	Women's	12mm
#29-60-12ML	Men's	12mm

### Adjust-a-Lift



Constructed of sponge rubber with a leather cover. Use "as is" for 3/8" buildup or peel off individual 1/8" layers for desired thickness (OK to reattach). Can be used to balance leg-length discrepancies. Fits right or left foot. **Sold per pair.**

#12-505-S	Small	2.25 x 5.25"
#12-505-M	Medium	2.5 x 5.25"
#12-505-L	Large	3.0 x 5.25"

### Black Adjust-a-Lift Heel Lift®



The Black Adjust-a-Lift is made with three layers of 1/8" open cell foam rubber. Helpful in treating symptoms arising from the effects of leg length inequality such as low back pain, hip pain and knee pain. Proven effective in the treatment of some foot and ankle conditions such as plantar fasciitis, heel spurs and Achilles tendonitis. **Sold per single lift.**

#21-507-S	Small	2.125 x 4.25"
#21-507-M	Medium	2.625 x 4.625"
#21-507-L	Large	3.125 x 5"

**Quantity Discount: 1-11 lifts, 12-23 lifts, 24+ lifts**

### PQ Firm Flat Heel Raise—6mm & 9mm

**PQ®**



Firm flat heel lifts for leg length discrepancies with blue fabric cover. **Sold per single lift.**

#40-2036	6mm (1/4")	S, M, L
#40-2040	9mm (3/8")	S, M, L

## Heel Cushions & Wedges

PQ®

### PQ Star Pattern Spur Heel Pads



Full 1/4" PQ plus 1/16" raised star field. Tapered to forward pad edge. Relieves calcaneal spur pain and plantar fasciitis. Blue fabric cover.

#40-156

S, M, L

### Biomechanical Heel Wedge—Plastisol (Latex and Allergy Free)



Made from long lasting shock absorbing material that is washable, non-allergenic, non-toxic and maintains its form and thickness. Simply switch wedge from left to right shoe to treat supination or pronation.

#29-D40

S (M5-8, W4-9), L (M9+, W10+)

### Covered Heel Wedge—Red Rubber (Heel Straights)



To correct hind foot valgus. Fits inside any shoe.

Small: 2 x 3.76", Medium: 2.5 x 4", Large: 2.625 x 4.375"

#13-18VB

S, M, L

### Uncovered Heel Wedges—Red Rubber Bulk



#13-81-1

Small

Child's/Youth's

#13-81-2

Medium

Women's/Boy's

#13-81-3

Large

Men's

## Heel Cups & Heel Grips

### Tuli's Heel Cups™

See page 32 for our full line of Tuli's Heel Cups.



### PQ Premium Gel Heel Cups

Dual durometer all purpose cup provides maximum shock and shear force absorption and dissipation.



#40-16-S	Small	M5-6 , W4.5-8.5
#40-16-M	Medium	M6.5-8.5, W9-12
#40-16-L	Large	M9+

### Pedag Stop Heel Grip—Leather Covered

Pedag STOP is a suede leather heel grip. German hand-made, durable vegetable tanned leather. Prevents abrasion.  
One size. **Adhesive back.**



#50-131	One Size
---------	----------

### Hapad Heel Grip—Wool

Grips heel and holds it snugly in place.  
Prevents shoes from slipping. Comfortably attaches around the back of the shoe.  
One size. **Adhesive back.**



#35-HG	One Size
--------	----------

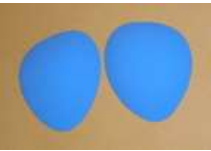
## Metatarsal Pads

### Metatarsal Pads—Sponge Rubber



#13-MP-20S	Small	1.375 x 2"
#13-MP-22L	Large	1.625 x 2"
#13-MP-24J	Jumbo	1.875 x 2.375"

### Metatarsal Pads—Poron Bulk



#6-35-7	Small	1.75 x 2.125"
#6-35-8	Medium	1.875 x 2.375"
#6-35-9	Large	2.125 x 2.625"

### Pedag Drop—Leather Covered



A standard met pad ideal for dress flats, heels and oxfords when a regular met is needed. Leather covered with **adhesive back**.



#50-134-S	Small	W5-7
#50-134-M	Medium	M7, W8
#50-134-L	Large	M10, W11
#50-134-XL	XLarge	M11-13

### Hapad Metatarsal Pads—Wool



Relieve pressure under metatarsal heads. **Adhesive back**.



#35-M-S	Small	.25 x 1.625 x 2.375"
#35-M-M	Medium	.3125 x 1.875 x 2.5"
#35-M-L	Large	.375 x 2 x 2.75"

### Metatarsal Bars—Poron Bulk



#6-20-0	Small	2.375 x 2.25"
#6-20-1	Medium	2.5 x 2.625"
#6-20-2	Large	2.625 x 2.875"

### Pedag T-Form—Leather Covered



A metatarsal pad that will span all 5 met heads. Ideal for dress flats, heels and oxfords. Soft sponge filler. Leather cover. **Adhesive back**.



#50-135-S	Small	W5-7
#50-135-M	Medium	M7, W8
#50-135-L	Large	M10, W11
#50-135-XL	XLarge	M11-13

## Metatarsal Care

### Hapad Dancer Pads—Wool

Distribute pressure away from the first MP joint. 5/16" thick.  
**Adhesive back.**



#35-DC-M  
#35-DC-W

Men's	2.75 x 3.25"
Women's	2.375 x 3.125"

**HAPAD**

### Hapad Metatarsal Cookies—Wool

A wider metatarsal pad. 5/16" thick.  
**Adhesive back.**



#35-COOK-M  
#35-COOK-W

Men's	2.5 x 2.5"
Women's	2.25 x 2.25"

**HAPAD**

### Hapad Longitudinal Metatarsal Arch Pads—Wool

A combination medial and metatarsal arch support.  
3/8, 7/16, 1/2" thick. **Adhesive back.**



#35-LM-S  
#35-LM-M  
#35-LM-L

Small	2.5 x 3.5"
Medium	2.75 x 3.75"
Large	3 x 4.25"

**HAPAD**

### PediFix Ball of Foot Cushion

Gives doctor-recommended relief from ball of foot pain and calluses. These soft, foam cushions soften every step. Helps eliminate rough, irritating calluses. Slips on over toes to stay in place without adhesives.



#20-P88	One Size	1 per package
---------	----------	---------------

**PediFix**

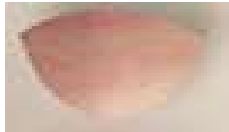
## Scaphoid Pads

### Scaphoid Pads—Sponge Rubber



#13-SR-3	C9-10	3 x 1.375"
#13-SR-5	Y13-1	3.25 x 2"
#13-SR-7	B4-5	3.625 x 2.25"
#13-SR-9	M8-9	4 x 2.375"
#13-SR-11	M12-13	4.75 x 2.5"

### Scaphoid Pads—Red Rubber



#13-8-09	XLarge	M8-10
#13-8-10	XXLarge	M11-13

### Pedag Step—Leather & Rubber

A rubber scaphoid arch with a leather cover.

**Adhesive back.** POP package.



#50-166-S	Small	W5-7
#50-166-M	Medium	M7, W8
#50-166-L	Large	M10, W11
#50-166-XL	XLarge	M11-13



### Hapad Scaphoid Pads—Wool

A traditional medial arch support with 5/16" thickness.

**Adhesive back.**



#35-S-S	Small	2.25 x 4"
#35-S-M	Medium	2.5 x 4.375"
#35-S-L	Large	2.625 x 4.625"





## Creams & Soaps

### Corganics<sup>®</sup> Natural Pain Reliever

All of us at the Verne Bintz Company are LOVING this Relief Cream! Ellen used it while marathon training, Verne uses it for back pain and Verne's wife uses it for arthritis. It has far and beyond exceeded our expectations without any side effects. And, the cost is more reasonable than its competitors. Call us if you would like to hear more about our experiences. We can't say enough about it!



Relief's superior effectiveness is a result of its unique, synergistic blend of essential oils (Peppermint, Eucalyptus, Lavender, Sweet Orange, and Menthol) and other natural ingredients (such as L-Arginine, MSM, Vitamin E, and Aloe Vera).

**Relief is a totally vegan product** that contains no animal or animal derived ingredients, and has never been tested on animals.

#31-Relief-Roll  
#31-Relief-Tube

3 oz. Roll-on  
4 oz. Tube

### PediFix Deep Healing Foot Cream



This rich, hydrating cream features mineral oil and vitamins A, D and E to moisturize and soften calluses and dry, rough skin. The special formula penetrates deep to help heal dry, cracked areas — which is especially beneficial for people with diabetes and sensitive feet.

#20-P3069

4 Ounce Jar



### PediFix Callus Control Cream



Hydrate and exfoliate in one step with this extra-strength formula. Urea penetrates calluses and thick, hard skin to produce soft, smooth feet that look and feel healthy.

#20-P3310

4 Ounce Jar



### PediFix FungaSoap



This patented soap is enriched with Tea Tree Oil — used since ancient times as a disinfectant, to fight germs, and as an antiseptic to help prevent infection. Use alone, as a complement to anti-fungal medications, and for longer-term relief and prevention of foot and body fungus problems.

#20-P3071

6 Ounce Bottle



## Miscellaneous, Impression Foam, Display

### Alpha Medical Compressive Support Ankle Brace



4-way stretch knitted elastic. The seamless design maximizes comfort and removes pressure points on the heel and back of the ankle. Latex free. Made in USA.

#27-3000-C

Closed Heel Sz. S-XL

Ankle Support Sizing  
Measure just above ankle bone

S	M	L	XL
7-8"	8-9"	9-10"	10-11"

### Tongue Pads with Adhesive Backing—Wool



#13-35-0

Small 3 x 1.875"

#13-35-1

Medium 3.25 x 2"

#13-35-2

Large 3.25 x 2.5"

#13-35-3

XLarge (for boots) 4.5 x 3"

### Plastic Shoe Horn



#50-272-23

23" Long Assorted Colors

#50-272-31

31" Long Assorted Colors

### Impression Foam—Drop Ship (Cost + Shipping)



Impression foam is perfect for creating semi-weight bearing casts of your patient's feet. Our impression foam is available in bulk or in boxes for easy storage.

#6-915-BP

24 Bulk Pack Singles

- 1 Case
- 2 Cases
- 3 Cases
- 4 + Cases

12 One Pair Kits Side by Side

- 1 Case
- 2 Cases
- 3 + Cases

#6-915-DT

### White Wire Counter Display



A great display when space is at a minimum!

- 12" wide x 15.25" high x 5.75" deep
- 16 hooks (4") provided

#1-Display-W

First display free with a \$150 order  
(one free per customer) or \$10 each





905 W. Liberty Dr. • Wheaton, IL 60187  
630-665-3113  
Fax: 630-653-5077  
[www.bintzco.com](http://www.bintzco.com) • [bintz@bintzco.com](mailto:bintz@bintzco.com)